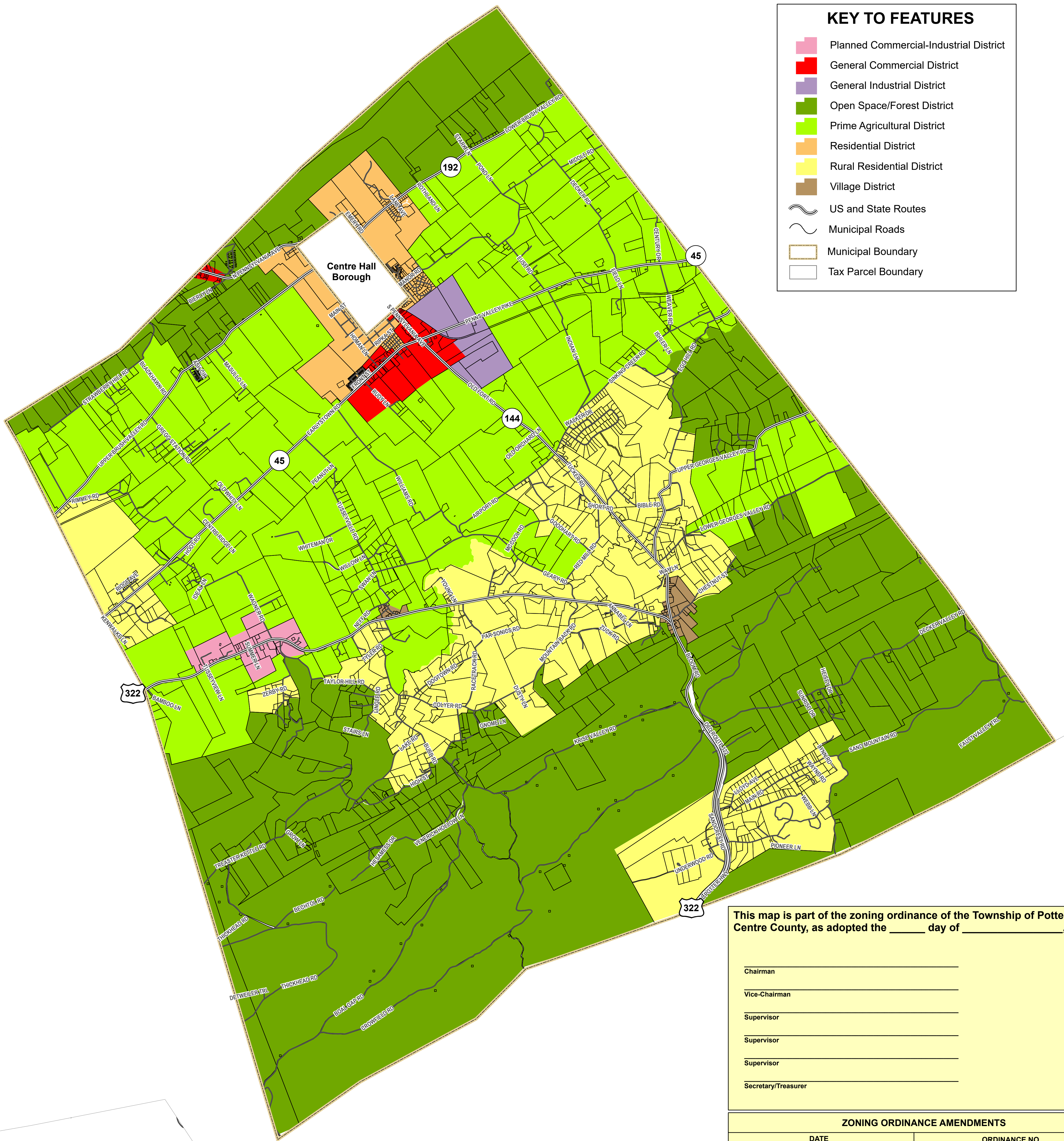


# POTTER TOWNSHIP

# Zoning Districts



**KEY TO FEATURES**

- Planned Commercial-Industrial District
- General Commercial District
- General Industrial District
- Open Space/Forest District
- Prime Agricultural District
- Residential District
- Rural Residential District
- Village District
- US and State Routes
- Municipal Roads
- Municipal Boundary
- Tax Parcel Boundary

This map is part of the zoning ordinance of the Township of Potter, Centre County, as adopted the \_\_\_\_ day of \_\_\_\_\_, 20\_\_.

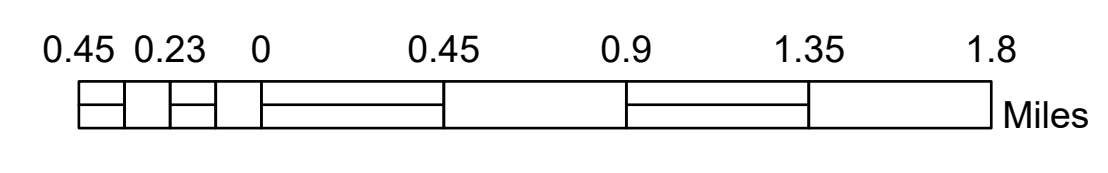
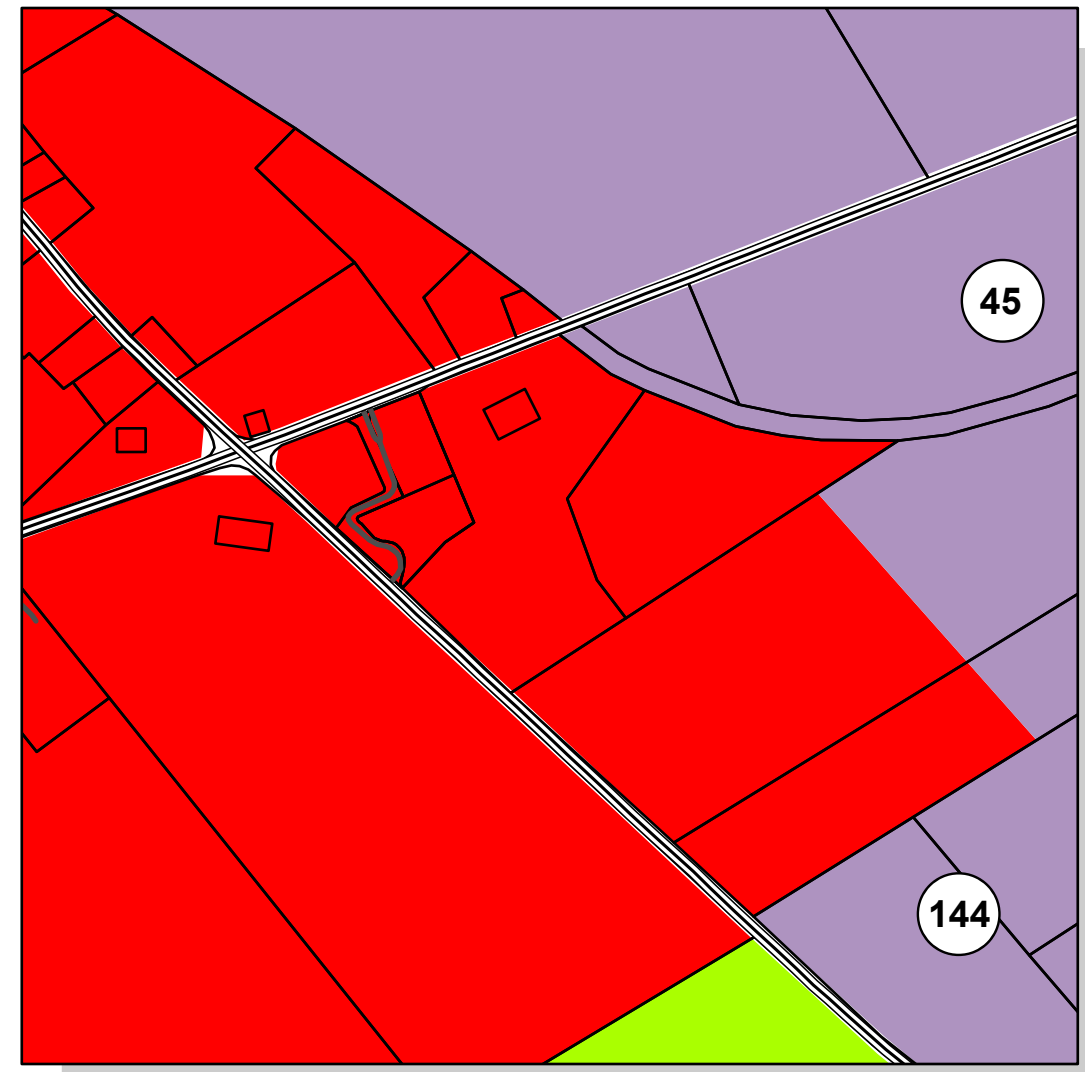
Chairman \_\_\_\_\_  
 Vice-Chairman \_\_\_\_\_  
 Supervisor \_\_\_\_\_  
 Supervisor \_\_\_\_\_  
 Supervisor \_\_\_\_\_  
 Secretary/Treasurer \_\_\_\_\_

| ZONING ORDINANCE AMENDMENTS |               |
|-----------------------------|---------------|
| DATE                        | ORDINANCE NO. |
|                             |               |

Planned Commercial-Industrial District on US 322



Old Fort



Prepared by the  
 Centre County Planning and Community Development Office,  
 April 17, 2019.

State Plane PA North Zone  
 North American Datum 1983

Sources: Original zoning district boundary delineations provided by the Township of Potter, County of Centre. All other data courtesy of the Centre County GIS Office and E911.