

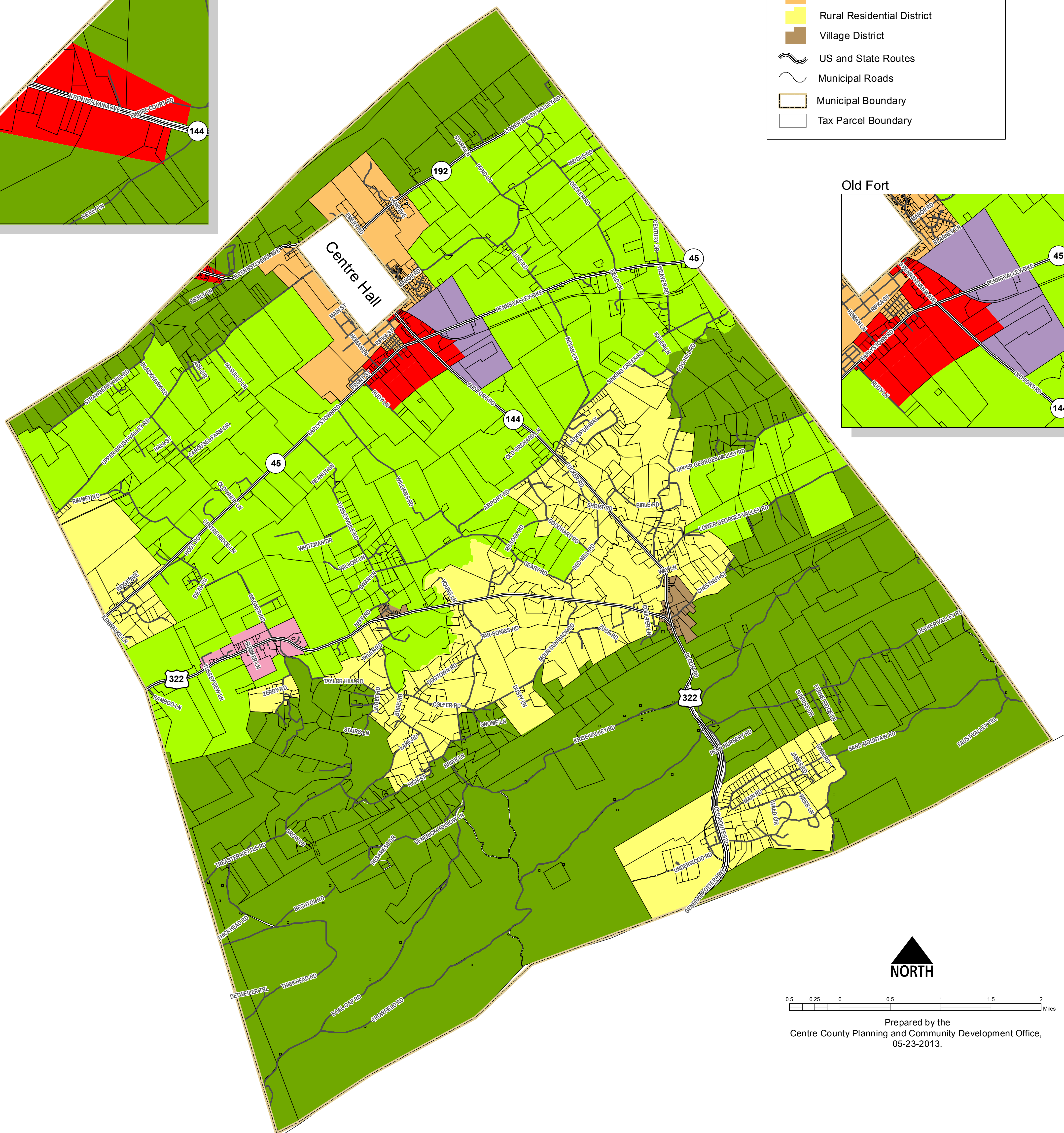
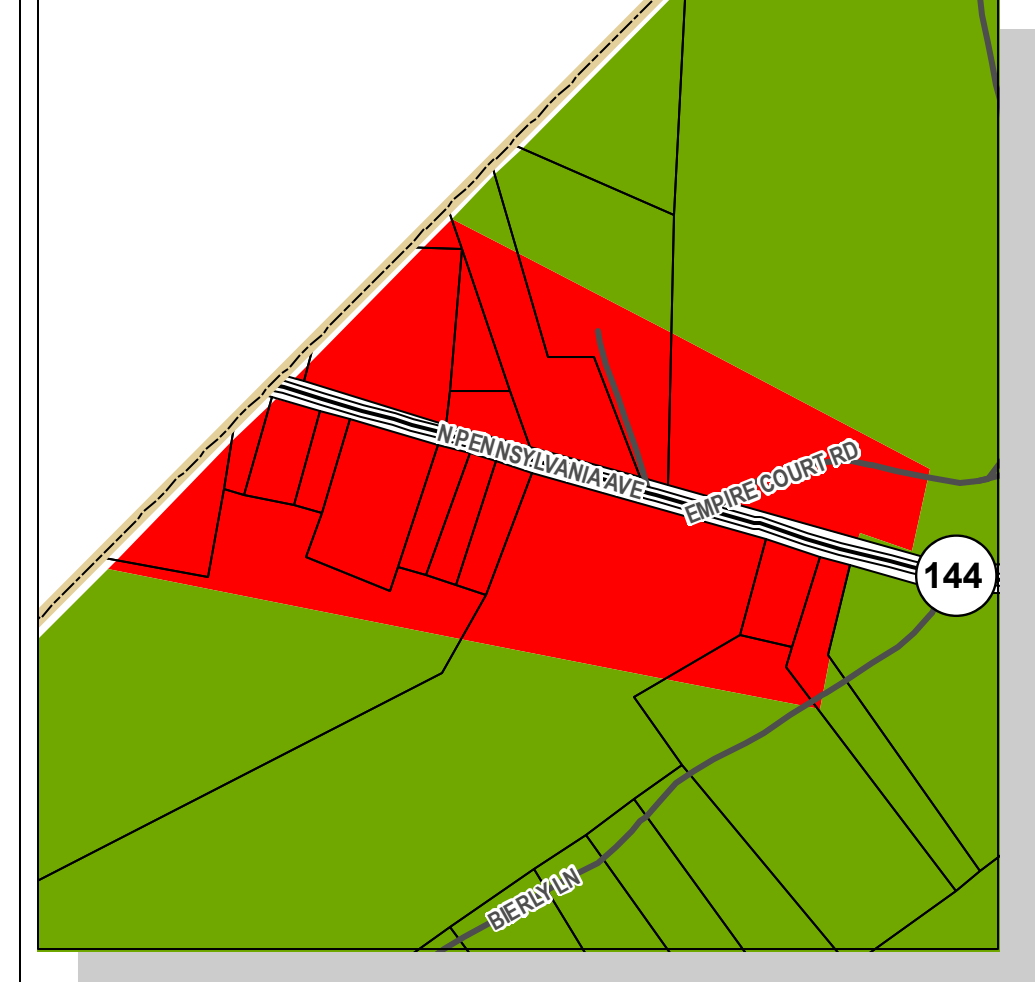
POTTER TOWNSHIP

Zoning Districts

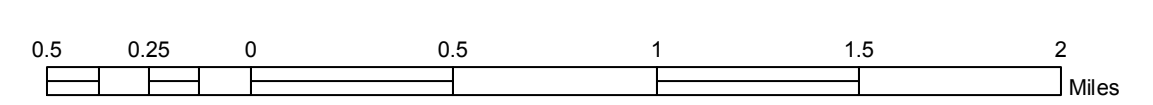
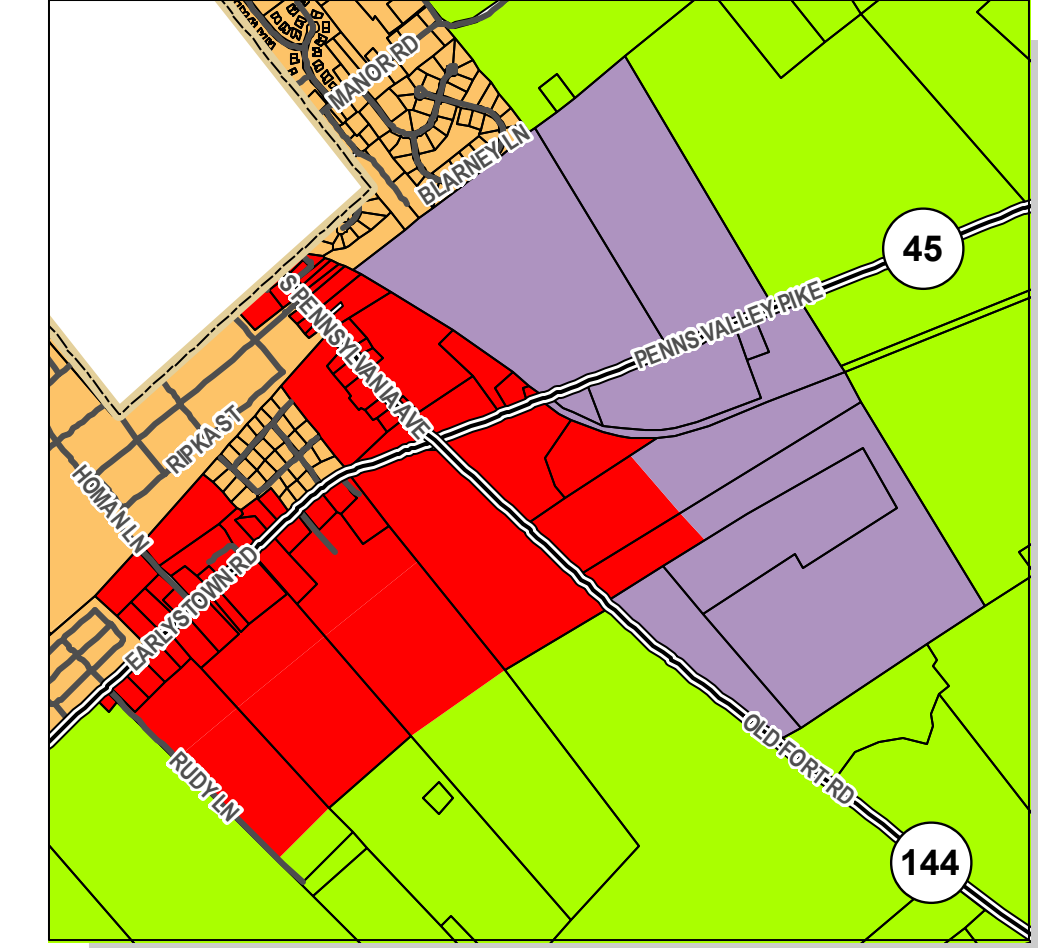
KEY TO FEATURES

- Planned Commercial-Industrial District
- General Commercial District
- General Industrial District
- Open Space/Forest District
- Prime Agricultural District
- Residential District
- Rural Residential District
- Village District
- US and State Routes
- Municipal Roads
- Municipal Boundary
- Tax Parcel Boundary

N. Pennsylvania Ave. (SR 144)

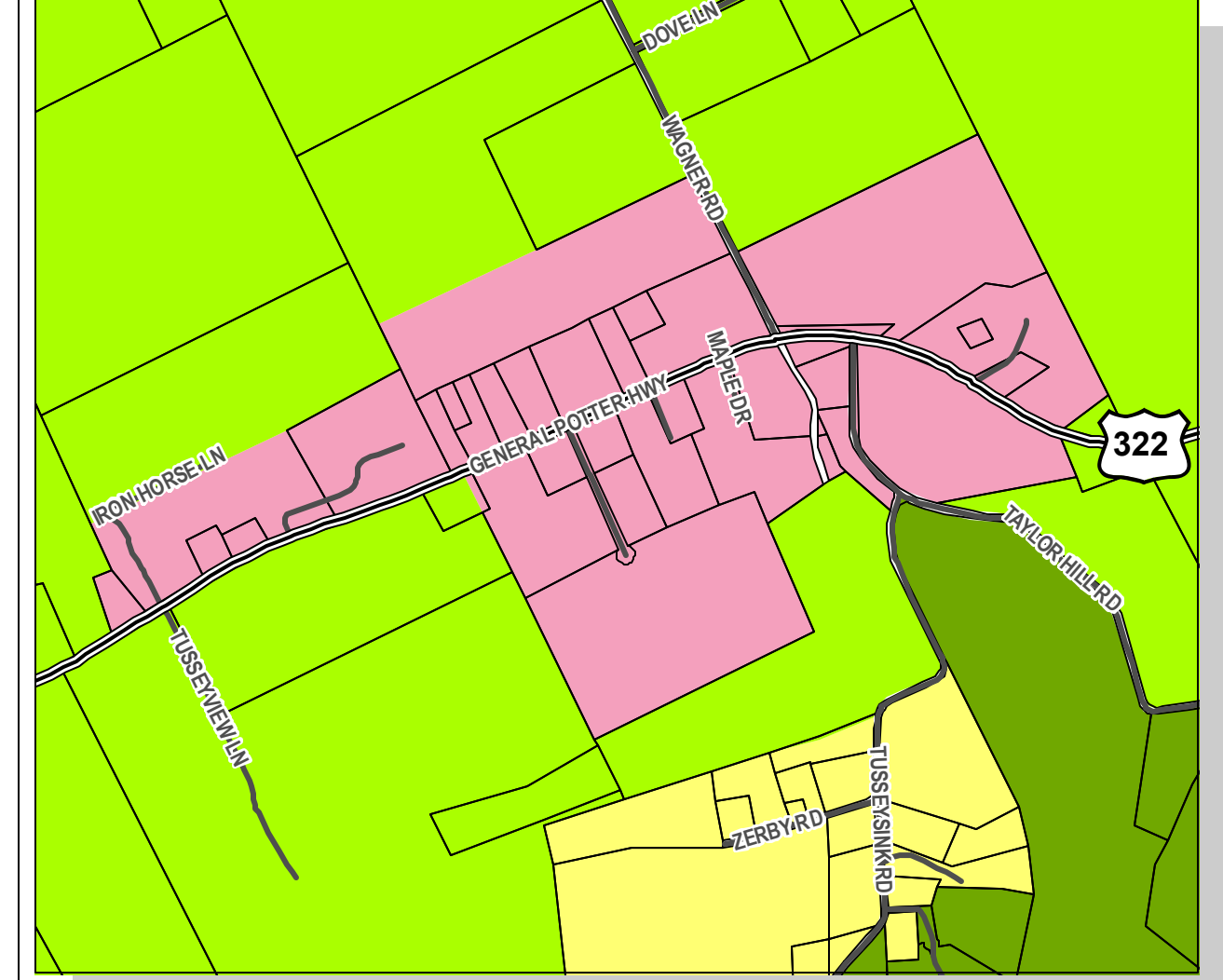


Old Fort

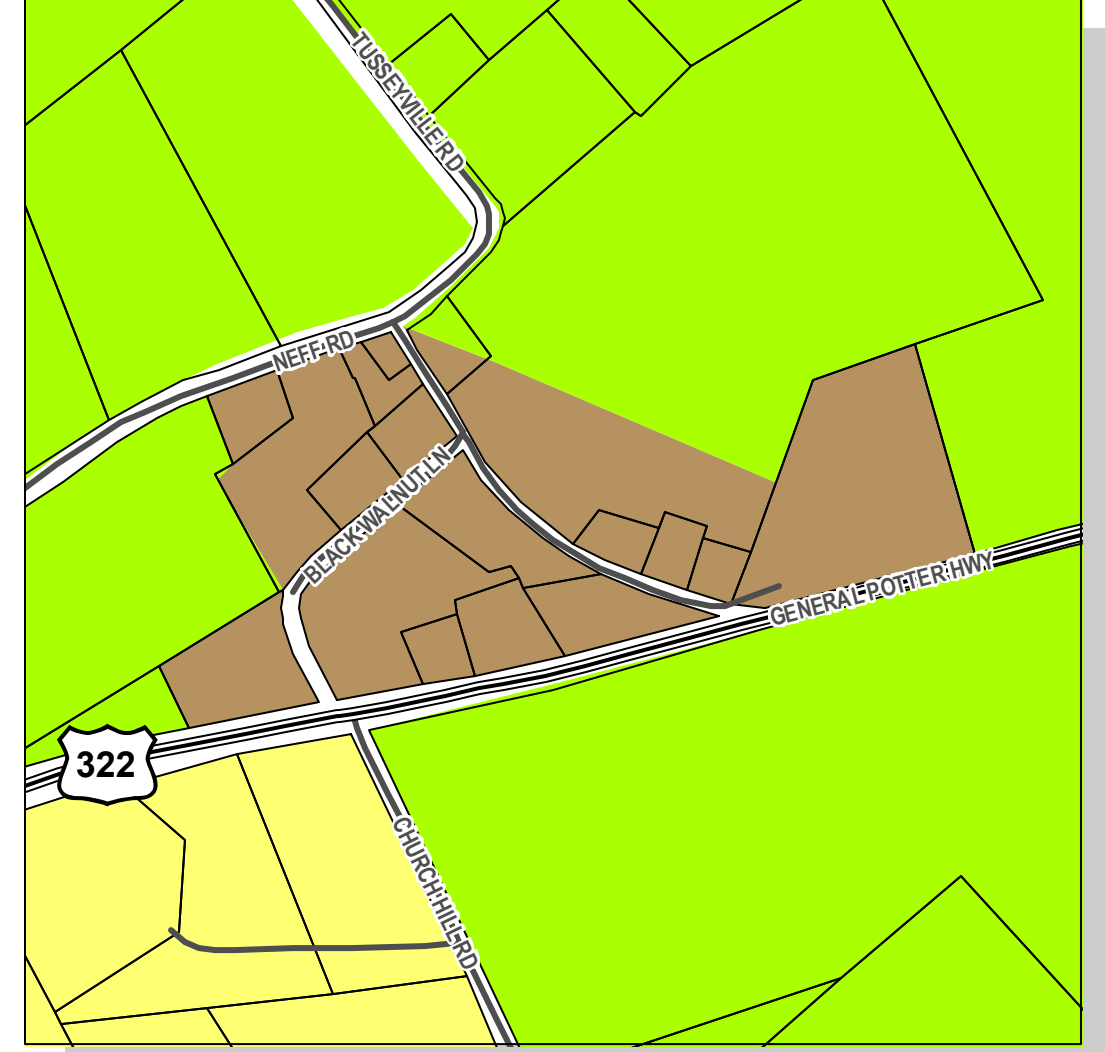


Prepared by the
Centre County Planning and Community Development Office,
05-23-2013.

Planned Commercial-Industrial District on US 322



Tusseyville



Potters Mills

